

V314 Mercedes- Benz GLS/GLE rear-seat drive control lifting tablet installation process and precautions

Prepare tools: plastic pry tool, screwdriver set (must have No. 10 socket, T45, T15 screwdriver), insulating tape, large towel, etc.Note: Pay attention to protecting the appearance of the central control, you can use a large towel to cover it.

- 1.Turn off the key switch and do not install with power on.
- 2. Please check the correct position when plugging in the cable. Do not force it in. Check the buckle to see if it is correct before plugging in the cable.



Mercedes-Benz GLS rear armrest original car picture



1、Remove the original car's passenger seat and find the original car host
The above is the original car passenger seat picture



2、Adjust the seat to the end with a No. 10 socket
Remove the two screws on the front



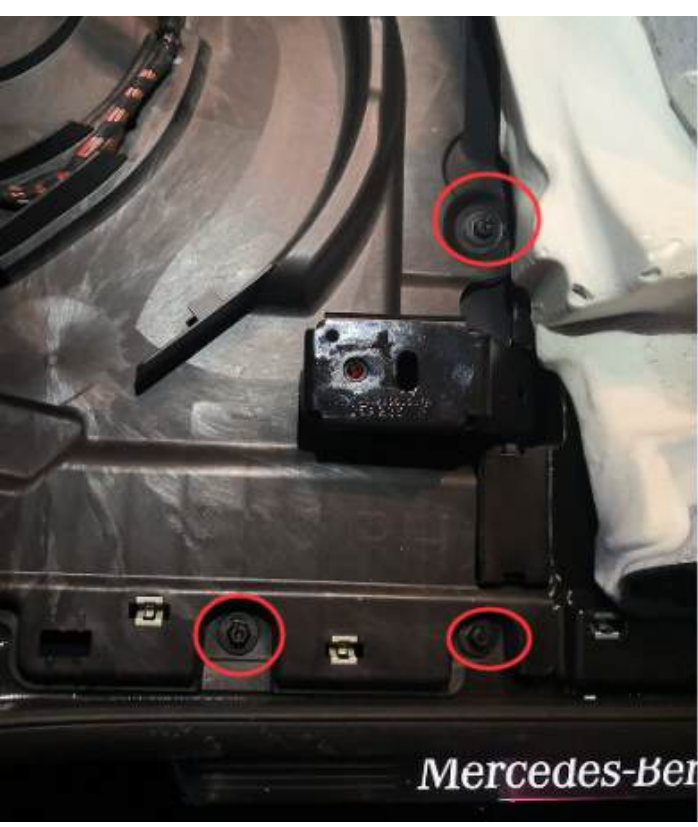
3、Adjust the seat to the front and remove the two screws at the back with a No. 10 socket. Remove the wind panel on the ground behind the seat.



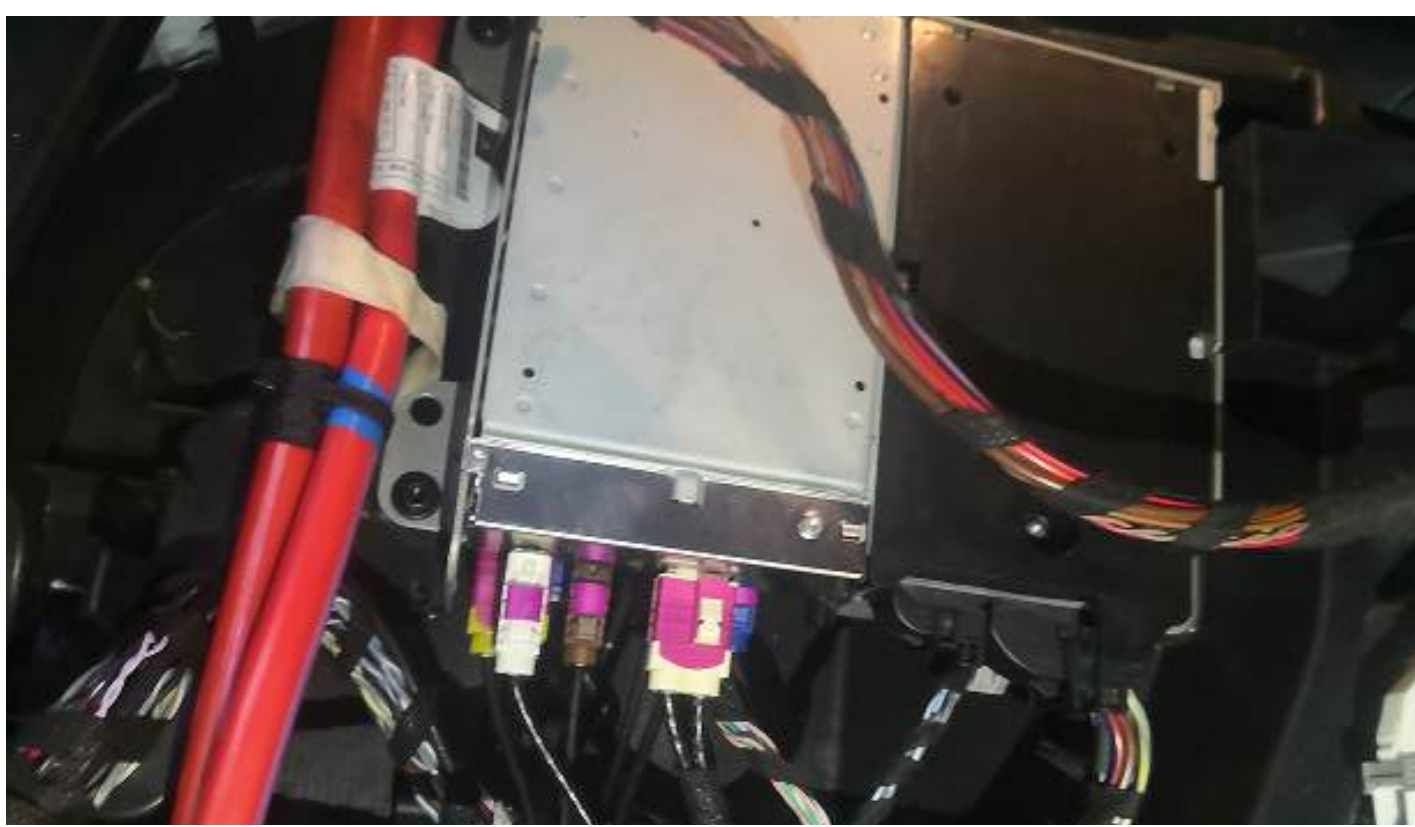
(4) After removing all the screws on the seat, move it to the back or put it on the ground (Note: if you move it to the ground, you need to unplug the wires on the seat)



(5) Remove the passenger and rear door sills



(6) Turn over the carpet of the seat and you will see a plastic partition with 5 screws. Use a No. 10 socket to remove it.



(7) Remove the original car's passenger seat and you can see the original host.



(8) Unplug the main power cord from the original car's power socket and reconnect it. (Unplug the left side first before unplugging the power socket.)



(9) Connect the product power cord to the original car host



(10) Tear off the 3M adhesive on the back of the control box and fix it in a suitable position.



(11) The power cord runs along the carpet.



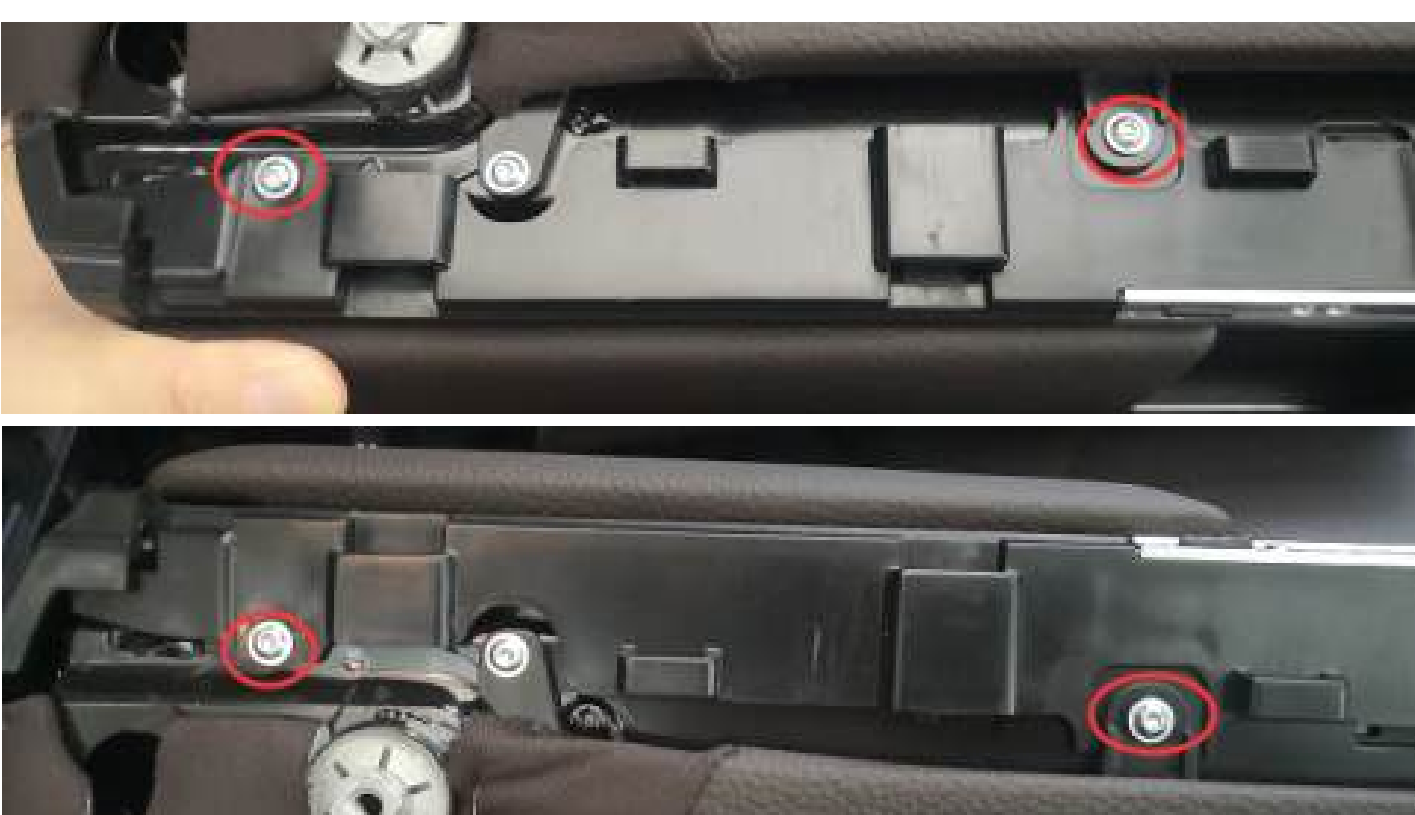
(12) Remove the rear seat armrest box. Lower the rear seat armrest box and remove the cover.



(13) After removing the cover, there are two screws that need to be unscrewed with a T45 screwdriver.



(14) Remove the white screws on both sides of the armrest box bracket



(15) Remove the armrest box trim and pry open the gaps on the left and right sides

(16) After removing the trim

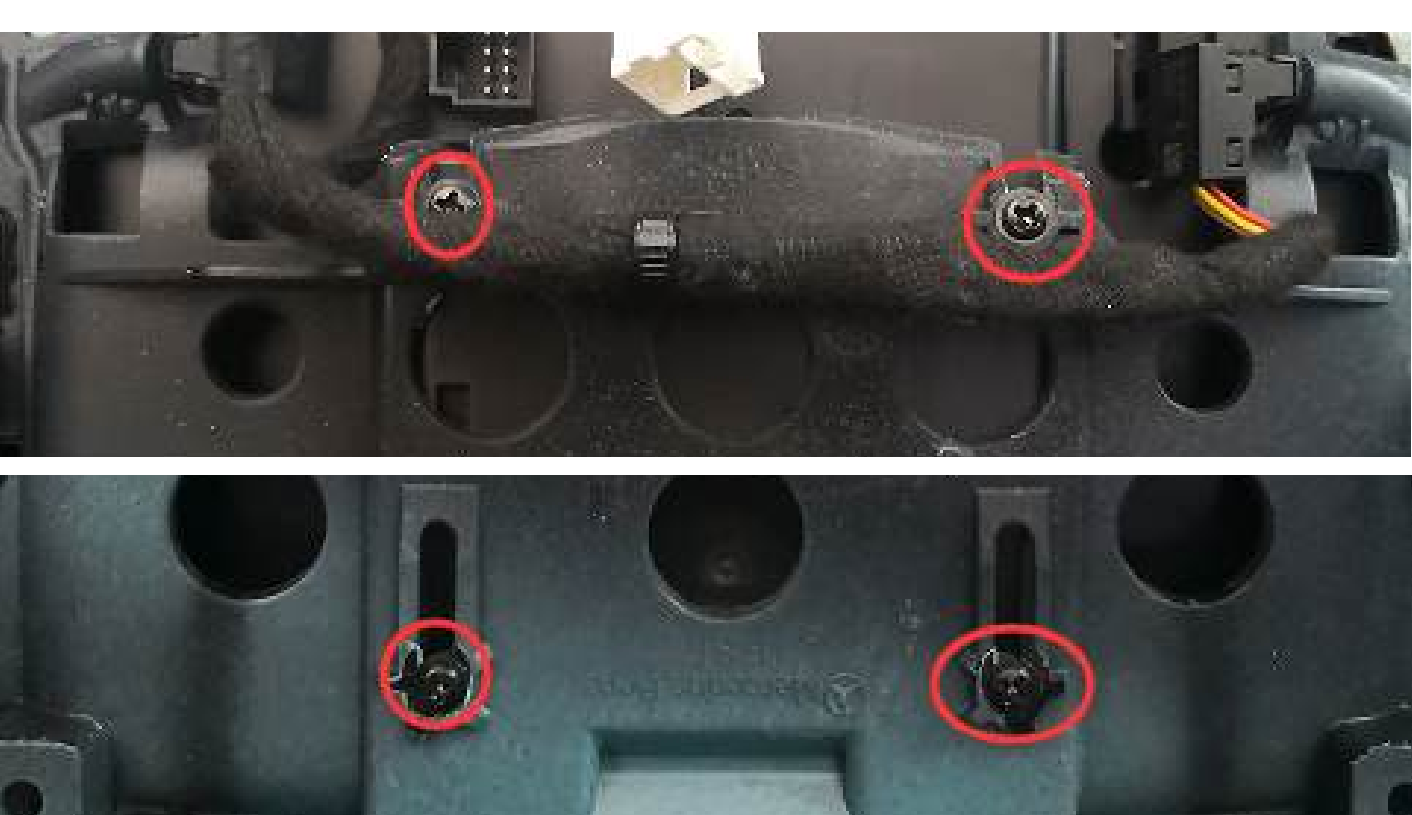
(17) After removing the trim panels on both sides of the armrest box wiring, there are a total of six screws on three sides. Use a T15 screwdriver to remove them.



(18)Follow the original car line and walk together



(20) Install the base and wiring.
Install the product base onto the original vehicle trim.



(21) After the base is installed with the decorative plate, fix it with 4 screws on the back



Effects before and after installation (after installation)



Boot effect diagram