

## V316 Smart Headrest Monitor Installation Instruction

### Prepare tools:

plastic pry tool, screwdriver set (must have No. 10 socket), insulating tape, large towel, etc.

### Note:

1. Pay attention to protect the appearance of the central control, can use a towel to spread it
  2. Turn off the key switch and do not install while the power is on
  3. When plugging in the wire, please make sure it is seated correctly. Do not insert it forcefully.
- Check whether the buckle is correct before plugging .

### 1. Remove the passenger seat of the original car and find the original car main unit.

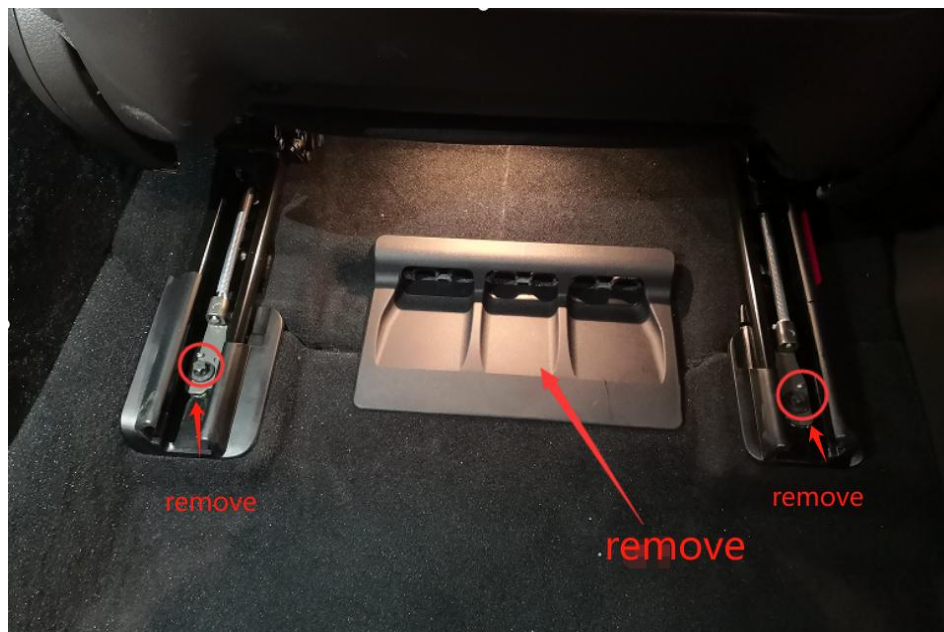
(1) Seat photo as below :



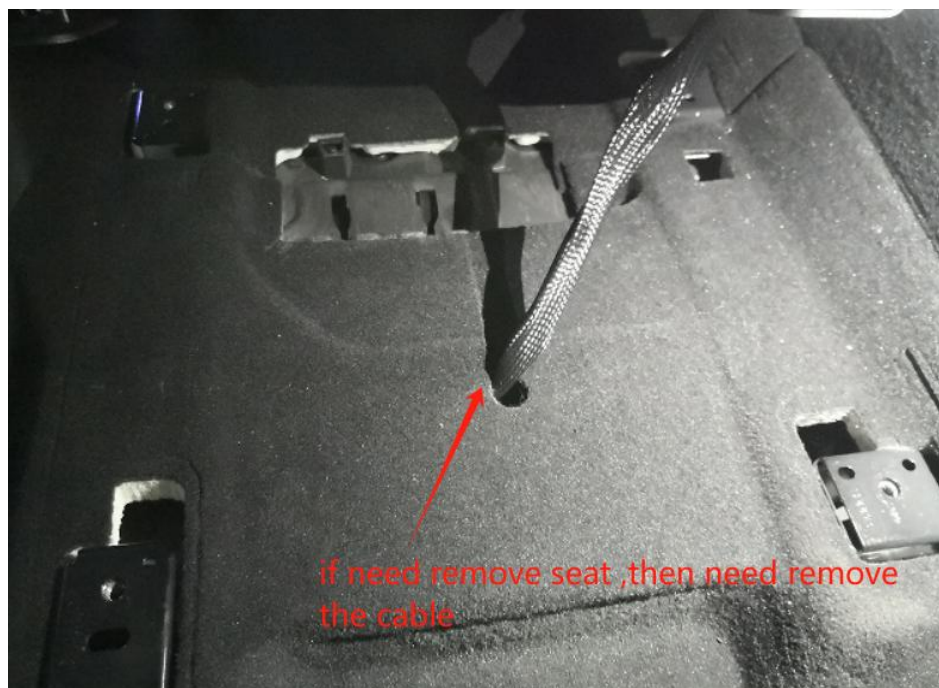
(2) Adjust the seat to the end and use a No. 10 socket to remove the two front screws as below picture in RED



- (3) Adjust the seat to the front and use a No. 10 socket to remove the two screws at the back. Remove the wind panel on the ground behind the seat.



- (4) After removing all the seat screws, you can move the seat to the back or place it on the ground (note: if you move it to the ground, you need to unplug the wire from the seat)



- (5) Remove the passenger door and rear door sill strips

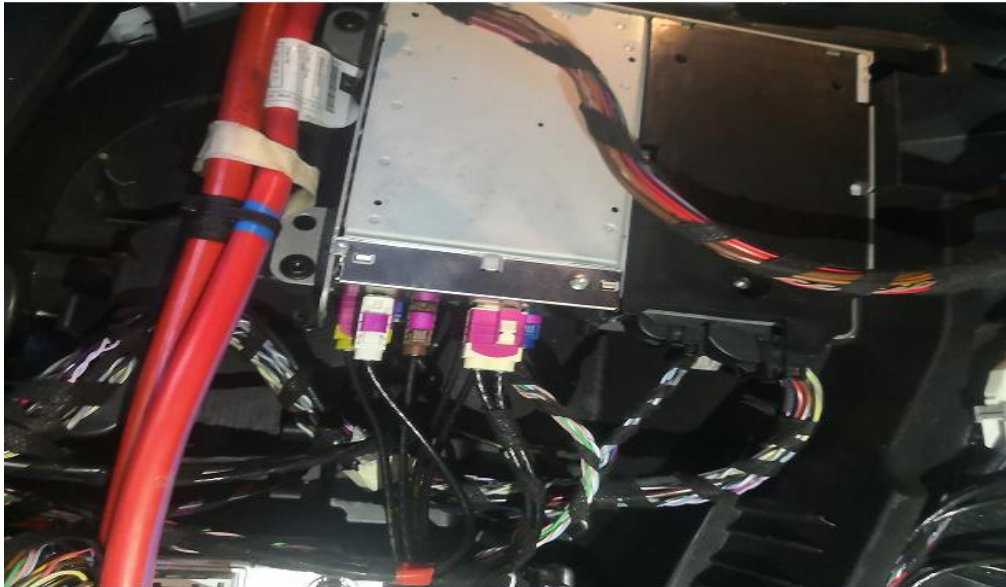


(6) Open the seat carpet and see a plastic partition with 5 screws. Use a No. 10 sleeve to remove it.



(7) Remove the original passenger seat and you can see the original head unit main host unit.



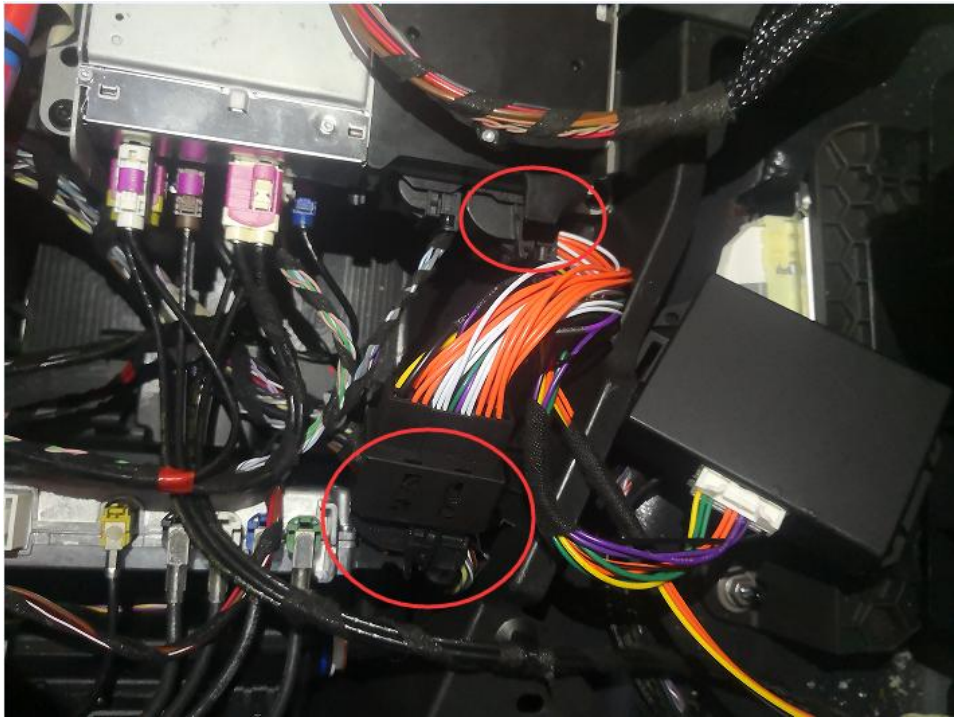


## 2. Main power plug and wiring

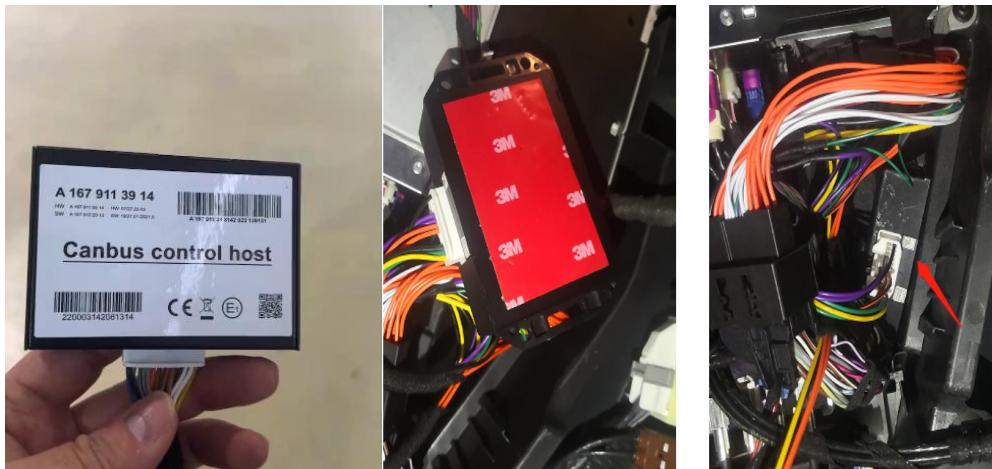
(1) Unplug the original car power cable socket and transfer it (you must unplug the left one first before unplugging the power socket)



(2) Connect the power cable of our product (our headrest screen) to the original car head unit main host unit



(3) Peel off the 3M glue on back of the CANBUS control box and find a suitable position to fix it.



**3. After installing the control box, restore the original passenger seat**

**Note: OR maybe restore the seat after testing our headrest screen**

**4. Install our headrest screen into the car's bracket of the headrest**

**Note: if original car doesn't have the bracket , then need install our bracket . the bracket used to fix and power supply to our screen.**

After cables connected correctly , press and hold on below button many seconds to power on the screen.

Swipe your finger up from the bottom of the screen to switch between MBUX and Android systems

